

DESCRIPTION

OTB-0616AOHDK is a plastic fiber optic terminal box that suitable for optical fiber splicing, distribution and protection. It can load 18pcs SC simplex adapters and 1pc PLC 1:16 steel tube type splitter. It support 16 drop cable output and cable entry without cutting.

Fiber optic terminal box are available for the distribution and terminal connection of various kinds of optical fiber system, especially suitable for mini network terminal distribution, in which the optical cables, patch cords or pigtails are connected.

FEATURES

Material: ABS+UV plastic

Max. 18pcs SC simplex adapter

Can load 1pc 1:16 steel tube type splitter

Cable ports: 2pcs M20 cable ports for $\Phi 6\sim 11\text{mm}$ cable entry

1 oval port support $\Phi 6\sim 18\text{mm}$ cable entry without cutting

16pcs 2*3mm drop cable output ports

Wall mounting and pole mounting application

Waterproof, outdoor using, IP65





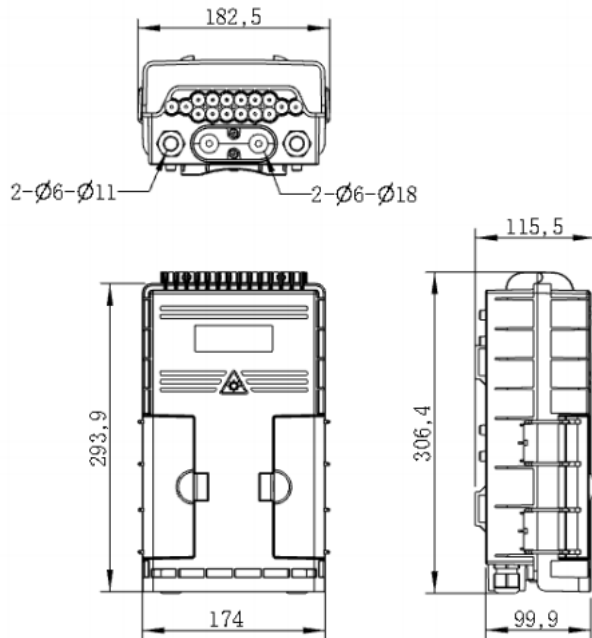
APPLICATIONS

FTTH access network / Telecommunication Networks / CATV Networks / Data communications Networks / Local Area Networks

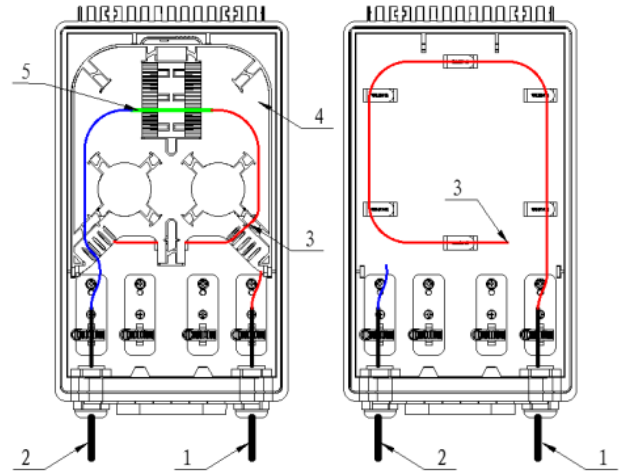
SPECIFICATIONS

Model	Dimension(mm)	Material	Adapter port	Splicing capacity	Cable port
OTB-0616AOHDK	182.5X306.4X115.5	ABS	18 SC simplex	16 fibers	2 PG gland + 1 oval + 16 drop cable port

DIMENSION DRAWING



Instruction:



- 1 - Cable entry port
- 2 - Cable output port
- 3 - Fiber optic cable
- 4 - Fiber optic splice tray
- 5 - Heat protection shrinkable sleeve

ACCESSORIES:

Item	Product	Specification	Qty
1	Heat protection Shrinkable sleeve	60mm*2.6*1.2	As per using capacity
2	Cable tie	3*120mm white	6 pcs
3	Countersunk Screws	C type 4*30 metal	4 pcs
4	Plastic Expansion Pipe	\varnothing 6mm plastic white	4 pcs
5	Insulating tape	0.15*17mm 8 yards black	1 roll