

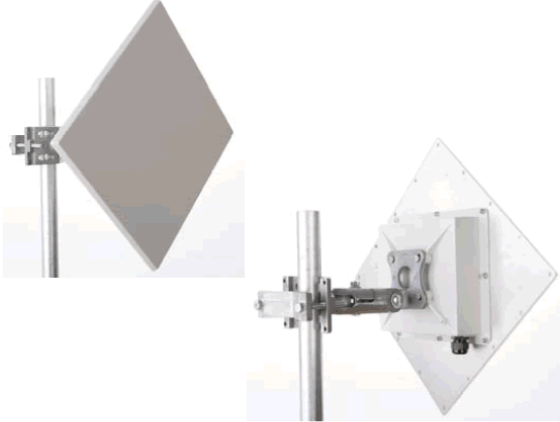


**4Net Networking Corp.**  
Computer Network Products

**4Net Networking Corporation**  
2900 NW 72<sup>nd</sup> Avenue - Miami - FL 33122  
Tel: (305) 599-0086 – Fax: (305) 599-1125  
[www.4netonline.com](http://www.4netonline.com) - [info@4netonline.com](mailto:info@4netonline.com)

**ARC wireless solutions™**  
"Patented Antenna Solutions"  
[www.4netonline.com](http://www.4netonline.com)

## 4.94-4.99GHz 19dBi & 5.15-5.875GHz 23dBi Panel Antenna for ARC IES™, Integrated Enclosure Solution



- ◆ High gain, low cost circuit design
- ◆ Low profile and rugged design for outdoor use
- ◆ US Engineered
- ◆ Manufactured under strict US quality control procedures
- ◆ Fits with ARC's IES™, Integrated Enclosure Solution SOLD SEPARATELY— Part # ARC-IE1001K99 or ARC-IE2000K01 (Gen II); ARC ABS™, Articulating Bracket Solution included with ARC-IE2000K01
- ◆ Custom Enclosures Available

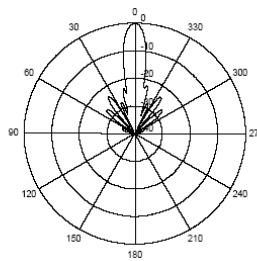
Mechanical and Environmental Specifications	
Length x Width x Depth	13.3in x 13.3in x .43in (33.8cm x 33.8cm x 1.1cm)
Weight	2.02lb (.92kg)
Backplane	Aluminum
Enclosure	Gray, Powder-coated die-cast aluminum
Radome	Gray, Injection Molded UV stabilized ABS plastic
Wind Survivability	125mph (201kph)
Wind Load	1.23ft <sup>2</sup> (0.12m <sup>2</sup> )
Operating Temperature Range	-49°F to +149°F (-45°C to +65°C)
Pole Mount Diameter Range	0.75in to 3.0in (1.9cm to 7.6cm)

Electrical Specifications	
Frequency Range	4.94-4.99GHz/5.15-5.875GHz
Gain	19dBi/23dBi
3dB Beamwidth Vertical/Horizontal	10deg/10deg
Polarization	Single linear, horizontal or vertical
VSWR	≤1.5:1 typ., ≤1.7:1 max.
Front-to-Back Ratio	>40 dB
Cross Polarization	>30 dB
Power Rating	30 watts
Impedance	50 ohms
Lightning Protection	DC ground
Connector Type	R/A SMA Jack

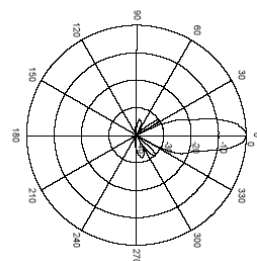
Ordering Information	
<u>Part #</u>	<u>Description</u>
ARC-IA5823B02	4.94/5.875GHz 19/23dBi, R/A SMA Jack

Shipping Information	
<u>Sizes and Weights</u>	<u>Description</u>
14in x 11in x 14in (35.6cm x 27.9cm x 35.6cm) 25lb, (11.34kg)	Antenna Packaging includes 10 antennas in a single over pack box

RF Patterns  
Vertical Cut, typ.



RF Patterns  
Horizontal Cut, typ.



Specifications subject to change without notice

Don't see what you need? Contact us to discuss alternate configurations

Rev: 010509